

# Title

INWARD SKIES

A Landscape of Emotions Through  
Monochrome and Unrealistic Color

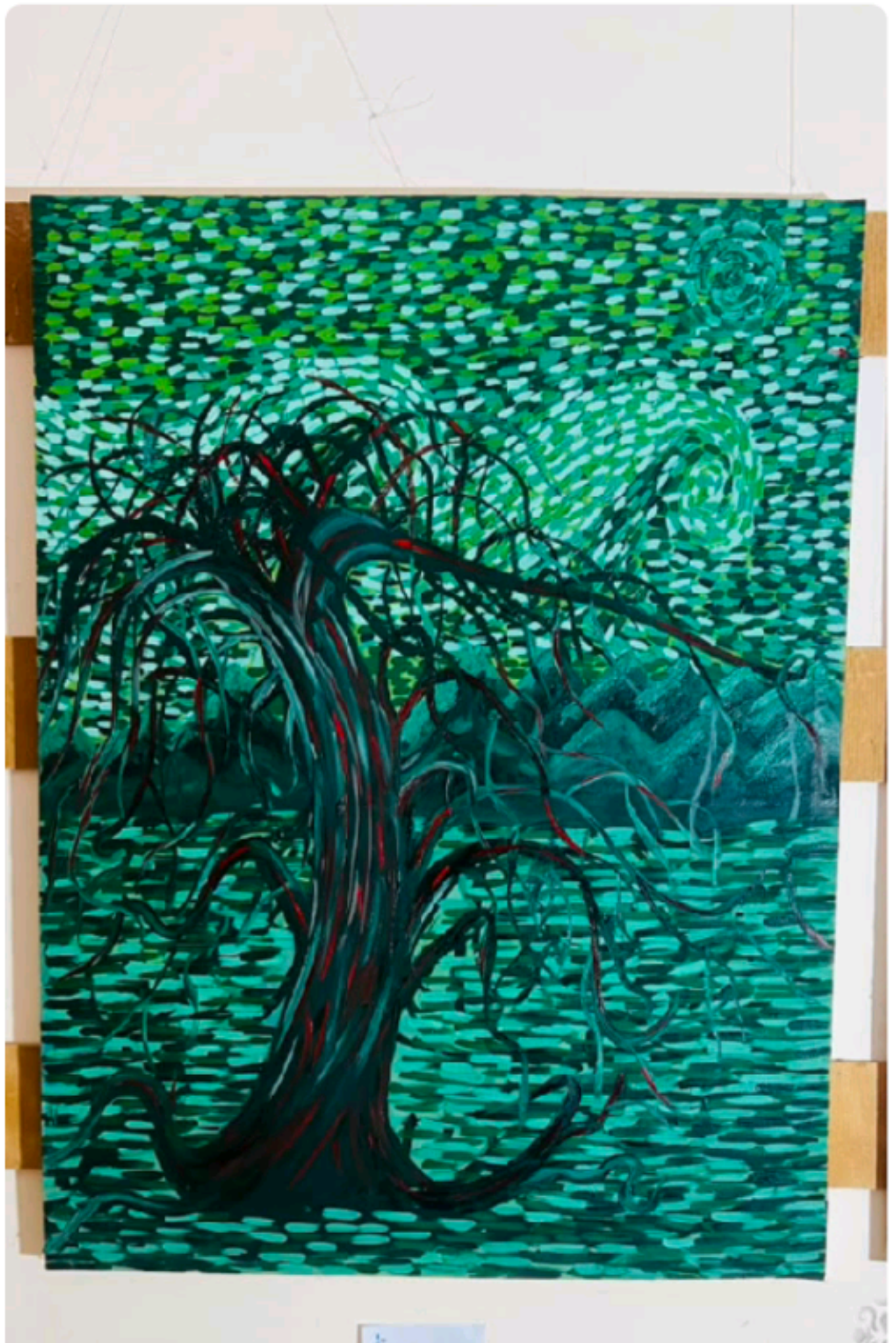
## Introduction:

This series is a personal tribute to my uncle who passed away from cancer. Every canvas represents a real emotion that my family lived through — painted in landscape, inspired by Van Gogh's emotional brushwork and Mondrian's angular tree studies.

## Canvas 1 — The Trembling | Anxiety | Olive Green

The twisted tree with no fixed direction represents anxious thoughts that go nowhere. Red lines inside show the inner burning that nobody sees from outside.

Even the cracked ground cannot hold still.



## Canvas 2 — Drown | Grief | Prussian Blue

The tree stands half submerged — still holding something above water — like a family trying to survive grief. The still water represents grief's silence — louder than any storm.





## Canvas 3 — The Hollow | Numbness | Cold Grey

The blurred background is the world still moving — but unfelt. Sharp black branches are deprivations — in numbness, only what is missing feels real. The red lines disappear — even pain goes quiet.



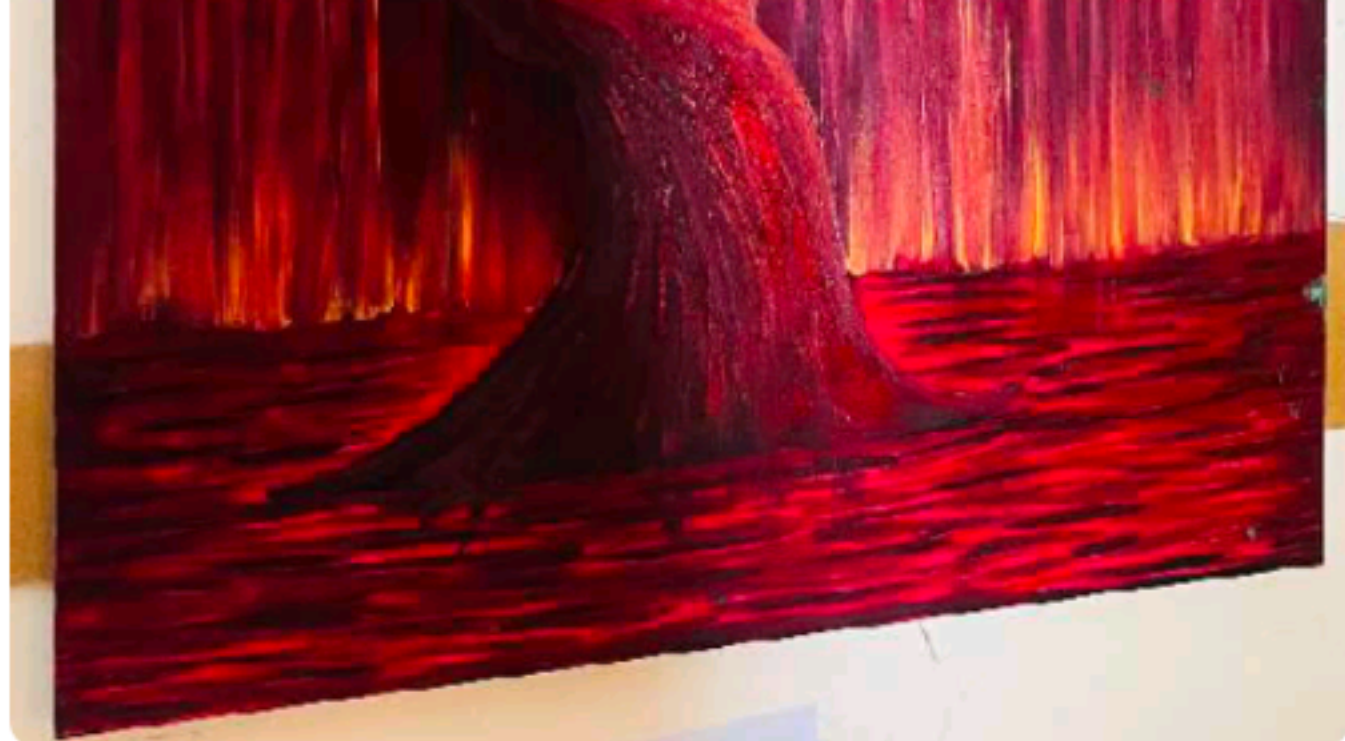


## Canvas 4 — Consumed | Rage | Burnt Red

After silence and emptiness, something

ignites. The tree burns in a furious swirling sky — yet stands unconquered. Rage is not weakness — it is the first sign that something inside is still alive.

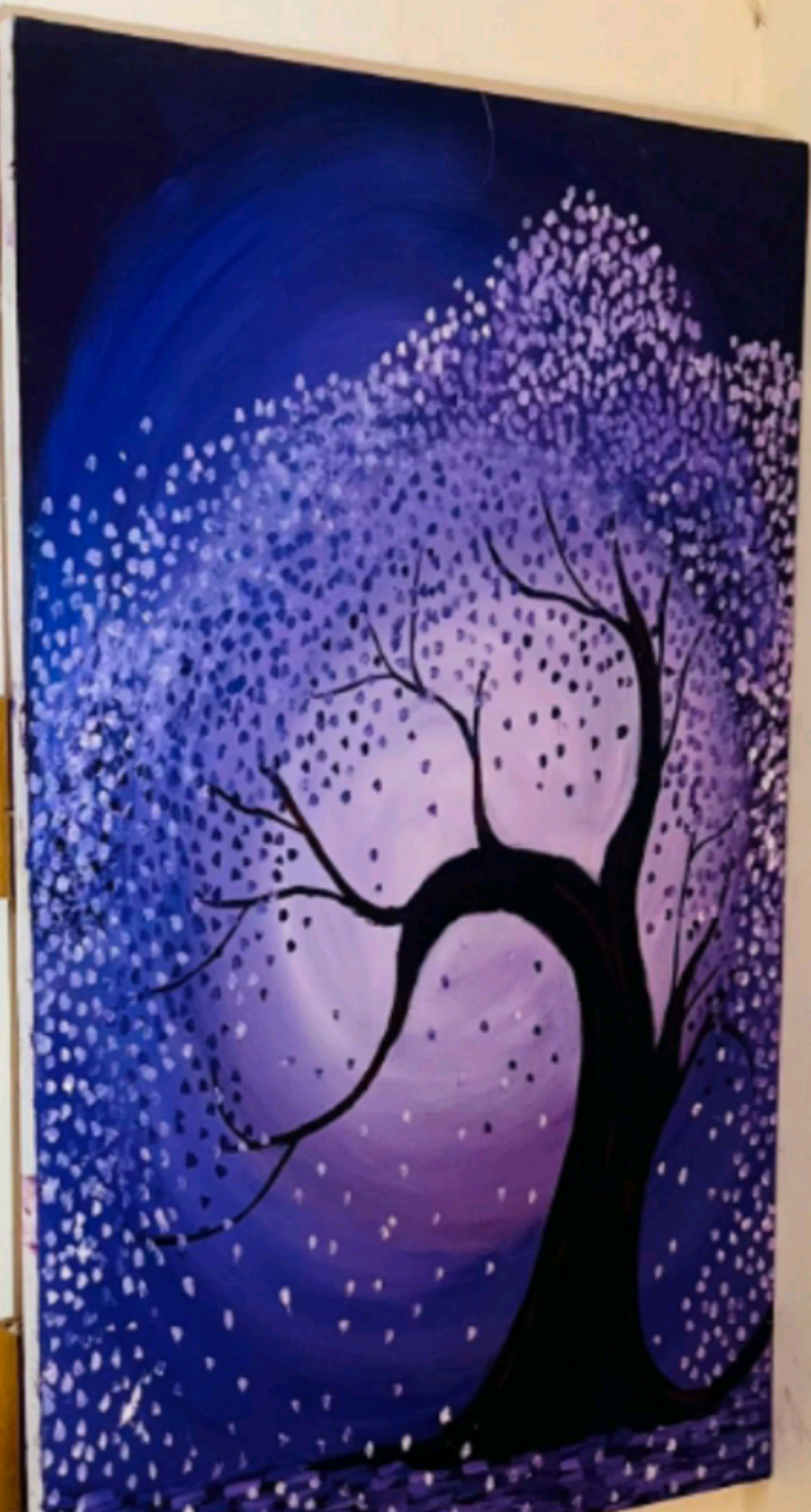


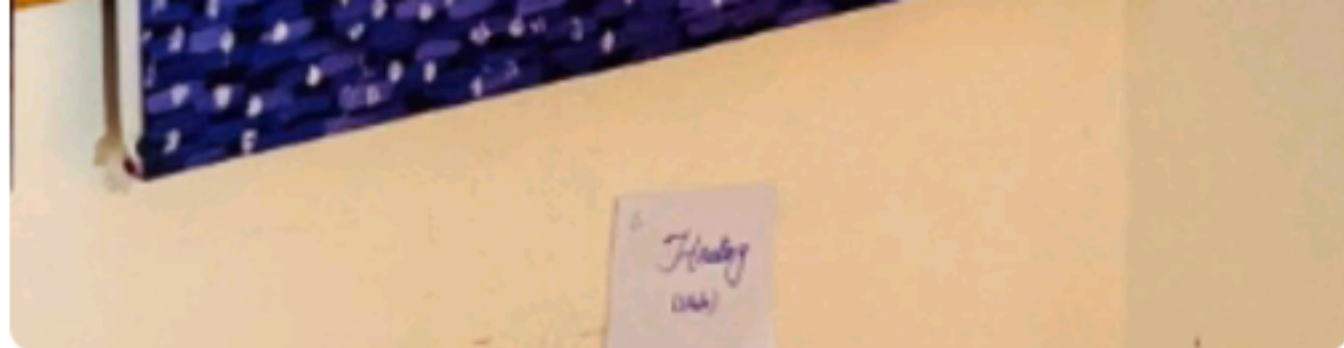


## Canvas 5 — The Silence After | Healing | Muted Violet

Cherry blossom petals scattered everywhere — healing comes from all directions at once. One red line remains — because healing does not erase pain, it grows alongside it.







## Canvas 6 — Fracture of Light | Hope | Unrealistic Color

The Cypress tree reaches upward — Van Gogh's symbol of hope and spiritual reaching. Monochrome is broken here — because hope cannot be contained in one color.



